



SUPPLY CHAIN MANAGEMENT & LOGISTICS SERVICES

HELPING YOU REDUCE COSTS AND GROW, SUSTAINABLY

SUPPLY CHAIN MANAGEMENT & LOGISTICS SERVICES

HOW WE HELP	3
SUPPLY CHAIN MANAGEMENT	4
LOGISTICS SERVICES	6
— MAIL, PACKETS & PARCELS	7
— ROAD FREIGHT	8
— AIR FREIGHT	9
— SEA FREIGHT	10
— CONTROL TOWER	12
— WAREHOUSING AND FULFILMENT	14
— SPECIALISED SERVICES	15
SUSTAINABILITY	16
DELIVERING HAPPINESS	18



We've been delivering happiness since 1999 with our unique offering of Supply Chain Management, Logistics Services, Technology Solutions and Sustainability Tools.

We work with manufacturers, distributors, wholesalers and retailers across a range of sectors, helping them improve productivity, meet order demand, surpass customer expectations and reduce their environmental impact.

IT'S TIME TO THINK DIFFERENTLY ABOUT YOUR SUPPLY CHAIN AND LOGISTICS

Ensuring a great delivery experience for your customers begins much earlier than outbound logistics.

At CCL, we understand this.

That's why our full suite of Supply Chain Management, Logistics Services and Technology Solutions, combined with the passion of our Customer Service teams, can support you across your entire supply chain.

As one of the few providers of true end-to-end supply chain visibility and logistics services, we take a holistic view of your inbound, outbound, storage and returns requirements.

Add to this our Control Tower, Smarter Sea Freight and Greener Routes, and we can fully align with your business goals to help you reduce costs and grow, sustainably.

- Supply Chain Management expertise
- All your logistics needs
- Access to over 1000 transport providers
- Unrivalled choice of logistics services
- One platform with full supply chain visibility
- Proactive Customer Service teams managing carrier performance
- 100% proof of delivery
- One single logistics invoice
- Carbon tracking for your Scope 3 emissions

SUPPLY CHAIN MANAGEMENT



Your business is unique and so are our solutions. We'll work with you to get the best out of your supply chain.

Combining the experience of our supply chain experts with our consultative sales process, we help you create significant change in your supply chain — removing complexity without compromise and helping you reduce costs and grow, sustainably.

THE WORLD IS CHANGING

Recent global events have highlighted supply chain issues that impact the supply of goods and how they flow to their final destinations. Together, they have driven home the need to build greater resilience across the board.

We can help you position your supply chain as a strategic differentiator, with the ability to anticipate, react to and manage issues as they arise.

KEY SUPPLY CHAIN CHALLENGES

Businesses face multiple supply chain disruptions:

- Supply chain resilience
- Inventory levels and lead times
- Changing consumer order patterns
- Ability to enter new markets quickly
- Environmental risk and impact
- Cost stability

BIG DATA

We'll help you leverage powerful insights to optimise your supply chain.

OUR PROVEN PROCESS

To help you build resilience and be successful in dealing with today's global issues, we take time to understand your business and work through a number of steps to increase your supply chain efficiency.



As your supply chain partner, CCL is fully aligned to your business goals, and together we will work to get the best out of your supply chain.

OUR LOGISTICS SERVICES AT A GLANCE

MAIL, PACKETS & PARCELS

Vast service options and powerful tracking capabilities let you say goodbye to shipping hassles for your smaller items and parcels.



ROAD FREIGHT

From Network Pallets to Part and Full Loads throughout the UK and Europe, experience the power of our extensive network and explore new horizons with our flexible and efficient road services.



AIR FREIGHT

No matter the size or destination, our air freight services offer a comprehensive range of options for your imports and exports. We'll craft the perfect solution to ensure collection and delivery to any corner of the world.



SEA FREIGHT

Our sea freight services are powered by partnerships with the most reliable shipping lines, ensuring the best routes and transit times for your FCL/LCL shipments. Discover how our tech-led smarter sea freight solutions can dramatically impact your supply chain management.



CONTROL TOWER

Unlock the value of partnership and benefit from the full breadth of our supply chain management and logistics expertise, along with our innovative technology solutions and dedicated Customer Service teams.



WAREHOUSING AND FULFILMENT

With strategically located warehouse and distribution partners all over the world, you can hold inventory and fulfil orders speedily, safely, securely with a tailor-made solution that reduces costs and guarantees service.



SPECIALISED SERVICES

Offering the full spectrum of refrigerated, dangerous and out-of-size services, we can ship or pack your goods — no matter how unusual or time-sensitive.



CUSTOMS CLEARANCE

Our expert teams will take care of the documentation for all your incoming or outgoing shipments, so you have peace of mind they're in line with each country's regulations.



MAIL, PACKETS & PARCELS

An unrivalled choice of mail, packet and parcel delivery services.



With a variety of carrier options, delivery choices and tracking capabilities, our mail, packet and parcel services offer you flexibility and convenience.

MAIL & PACKETS

They may be small in size, but mail and packets can play a crucial role.

With a variety of services, our solutions reduce packaging, cut down costs and deliver on time.

MAIL

We provide flexible, fast and cost-effective solutions for your UK business mail. Whether it's sorted or unsorted, regular correspondence or ad hoc, we have the right fit for you.

PACKETS

With a range of delivery services based on size, weight and a choice of tracked or untracked, packets can avoid using parcel services unnecessarily and contribute to cost management.

PARCELS

Around the corner or around the world, our unrivalled range of parcel carriers and services meets your needs for shipping to the UK, Europe and beyond.

Our expert team will find the right mix for you and your customers, with the ideal combination of carriers, service, quality and price.

OFFER GREATER CHOICE

- next day
- economy
- timed delivery
- store drop off
- weekend service
- returns

MULTI-CARRIER SHIPPING

With myCCL multi-carrier shipping, you can compare prices, then book directly with the best carriers and track your items through to delivery.

Leverage your strategic partner agreements or use ours – whichever is best for you.

ROAD FREIGHT

Rely on the expertise of our dedicated road freight teams.

From Network Pallets to Part and Full Loads, our extensive network of transport providers across the UK and Europe offers a reliable, high-quality service. We'll find the right solution that gets your freight to its destination on time and on budget.

NETWORK PALLETS

Access the largest pallet networks and groupage operators across the UK and Europe for a service that fits your timescale and budget.

Compare and book prices on myCCL or contact our team of logistics experts to do it for you.

HAULAGE

With a little black book containing the best independent operators through to Europe's largest haulage companies, we offer you more choice than any single supplier for your part or full load.

- LTL/FTL
- trailers
- trucks
- box vans
- tautliners
- high cubes
- step frames
- double-deckers

BACKLOADS

We use our extended network to find a haulier in the right location, with the right capacity and at the right price to carry your part or full load on its return journey.

This cost-effective service helps decrease road congestion and reduces empty miles travelled.

10,000+

HAULAGE DELIVERIES AND OVER

500,000 PALLETS
DELIVERED SAFELY EACH YEAR

AIR FREIGHT

Depend on our air services to get your goods where they need to be – on time and on budget.

AIR

Our dedicated Freight Forwarding Team works with a global network of air freight suppliers to find you the best solution for your imports and exports.

— AIR FREIGHT

The fastest freight option, you can choose from a comprehensive range of services including economy, next-flight out, express, day or time-defined charter.

From a few boxes to a full container load, you can rely on us to get your urgent or high value goods delivered.

— DELIVERED HOW YOU WANT IT

Our fully flexible solutions let you choose whether to move goods door-to-door, airport-to-airport or any combination in between.

SEA-AIR

When air freight is too expensive and the sea voyage is too long, sea-air provides the best of both worlds.

— SEA-AIR FREIGHT

The perfect balance of cost and speed for when you need your goods quicker than the long sea voyage from Asia to Europe, but air freight prices are just out of the question.

For example, goods move by sea from Shanghai to Dubai and are then transferred to an aircraft for the rest of the journey.

FULLY ACCREDITED

Our accreditations as BIFA and FIATA agents give you peace of mind that our team is expert in freight operations and can ensure the smooth movement of your goods.

SEA FREIGHT

Putting you at the helm with CCL's Smarter Sea Freight Solutions.

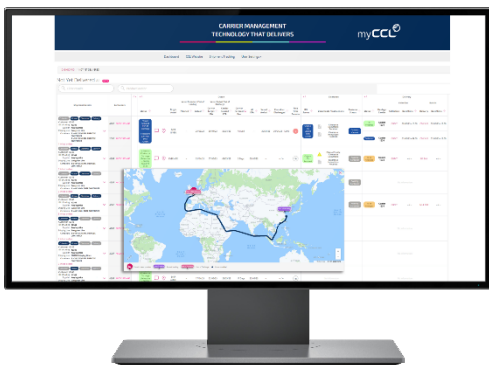
Our smarter sea freight solutions give full visibility of your supply chain, with powerful planning and exception management tools.

GPS VESSEL TRACKING

Track all your FCL and LCL shipments from port to port with GPS vessel tracking. Follow the progress of an individual shipment or get an overview of your full supply chain with our live Vessel Mapping software.

DYNAMIC ETA'S

Know when your goods will arrive so you can get on with critical business planning. Updates flow into myCCL and dynamically adjust the predicted ETA, so you have the most accurate date for when your goods will arrive at the final port of discharge, clear customs and ultimately be delivered.



PRODUCT LOCATOR

Keep on top of supply chain planning and production scheduling with myCCL's Product Locator. Search for goods by product description or SKU to find the vessel, container and predicted arrival date — eliminating the need to manually update spreadsheets and saving hours of valuable time.

FREE-TIME COUNTER

Avoid additional charges with myCCL's Free-Time Counter. It lets you know how long you have until each container starts incurring charges, so you can prioritise clearance and delivery to prevent any unwanted costs.

SERVICE YOU CAN DEPEND ON

Enjoy peace of mind that your goods will arrive when they're meant to. As your trusted freight partner, we only work with the most reliable shipping lines to optimise dependability of sailings and minimise the pain of rolled cargo.

ALL YOUR DOCUMENTS IN ONE PLACE

Access important shipping documents whenever you need them. All your order, invoice and import/export documents are stored on myCCL, keeping them in one central place and easy to retrieve at any time.

DEDICATED CUSTOMER SERVICE

Get help when you need it most. Our knowledgeable Customer Service teams and dedicated Account Managers are available to help, answering any questions and supporting you in exceeding your supply chain goals.

CARBON TRACKING

Help meet your company's sustainability goals. myCCL calculates the carbon footprint for all your supply chain movements, helping you manage and report both upstream and downstream Scope 3 emissions across all modes of transport.

ONE PLATFORM FOR ALL YOUR LOGISTICS NEEDS

Get visibility of your entire supply chain with myCCL, whether inbound, outbound or return shipments. No matter how complex your needs, we consolidate your shipment data across all modes of transport and carriers on one easy-to-use platform.



CONTROL TOWER

Helping you unlock the value of partnership with our unique combination of people, technology and choice.

Combining the full breadth of CCL's supply chain services and logistics expertise, in tandem with our powerful technology solutions, Control Tower is a fully managed service that provides complete control of your supply chain.

DEDICATED CUSTOMER SERVICE TEAMS

Our specialist teams manage the entire process from start to finish, proactively tracking all your shipments from collection to delivery. Acting as an extension of your business, we'll manage service delays and claims handling on your behalf.

TECHNOLOGY THAT DELIVERS

Our suite of innovative technology solutions – embedded in our TMS – will transform your supply chain by providing multi-carrier shipping, end-to-end visibility, and centralised data that's more easily managed for improved performance reporting and cost analysis.

ALWAYS THE RIGHT CHOICE

Our strategy of outsourcing all our logistics services makes us carrier agnostic, so you can be assured that we will always get the best solutions for your business.

PROCUREMENT CONSULTATION

Through a consultative logistics procurement process, we build and optimise tailored solutions with improved buying power, matching your requirements with the right providers and services. Bring your strategic partners, or use ours, and make sure you always get the best deal.

THE POWER OF 3
PEOPLE
TECHNOLOGY
CHOICE

TOTAL LOGISTICS COST MANAGEMENT

Harmonising data to leverage spend is key to delivering full logistics cost management:

- Open book pricing
- Consolidated buying power
- Extended & harmonised credit terms
- Freight audit and settlement
- One invoice – by cost centre

SINGLE POINT OF CONTACT

A single point of contact for all logistics services simplifies communication and streamlines processes, saving your teams valuable time.

CONTINUOUSLY ALIGNED TO YOUR GOALS

By entrusting CCL with your logistics, you get a supply chain partner fully aligned to your objectives. With this shared vision and a continuous improvement approach, we'll help you optimise operational and financial performance, business processes and total logistics costs.

A MULTITUDE OF BENEFITS

From procurement through to delivery of finished goods, you can expect better visibility, powerful data and insights, improved decision-making and exception management, as well as simplified business processes.



WAREHOUSING AND FULFILMENT

Optimise your inventory management with our warehousing and fulfilment solutions.

With strategically located warehouse and distribution partners wherever you need them, you can reduce inventory while still fulfilling orders speedily, safely and securely.

— WAREHOUSING

We provide flexible solutions for both temporary and long-term storage, including:

- stock management
- replenishment
- local delivery
- pick-pack-dispatch
- specialist loading and handling
- bonded warehousing

— FLEXIBLE TO YOUR NEEDS

If you are growing, expanding into new markets, moving stock closer to your customers or increasing stock levels, we can help.

We'll tailor your contract to suit your exact requirements, and help you reduce overheads by converting fixed costs to variable.

— FULFILMENT

At CCL, we offer a competitive, flexible and efficient pick-pack-dispatch service.

Our partners process orders as and when you need them – daily, weekly or monthly. When they receive your order, they quickly pick what's needed, then pack and label them ready for uplift.

Have us organise your onward shipping for a seamless, hands-off sales process that lets you focus on your core business.

SPECIALISED SERVICES

Innovative solutions for specific logistical challenges, and bespoke solutions tailored to your specific shipping needs.

SPECIALISED LOGISTICS

We'll get any size and type of shipment to any destination in the UK, Europe or Worldwide.

— ANY SERVICE, ANYWHERE

We cover specialised logistics services, including:

- refrigerated (with single or multi-temperature transportation)
- dangerous goods
- wide/low loads
- cranes and hiabs
- one- or two-person deliveries

From our network of specialist carriers with thousands of vehicles, we'll find the best solution for you.

— ANY SIZE, ANYWHERE

We can get any size of shipment to any destination in the UK, Europe or worldwide.

Our delivery options include time sensitive, same day, product recall and events shipping services.

EXPORT PACKING

Packing and cases to secure valuable, awkward or sensitive goods during transit.

— EXPORT PACKING

We provide a service tailored to your specific needs via our expert suppliers who design, build and pack cases that secure your goods during transport.

CUSTOMS CLEARANCE

Your documents are in safe hands.

— DOCUMENTATION SORTED

We'll take care of customs clearance and delivery instructions for all your freight shipments, regardless of mode, saving you admin time and ensuring customs compliance.

— ACCESS AT ANY TIME

Access all your order, invoice and import/export documents on myCCL whenever you need them.

SUSTAINABILITY

MEASURE.
MANAGE.
MINIMISE.

Our carbon tracking solution helps you measure, manage and minimise your supply chain emissions.

With all your logistics data on myCCL, our integrated carbon tracker can calculate the transportation and distribution emissions for your end-to-end supply chain.

INSTANT ACCESS TO YOUR EMISSIONS DATA

Simply log in to myCCL to view your carbon emissions, with data appearing on the platform for all shipments immediately after proof of delivery.

CARBON EMISSIONS DASHBOARD

Our Carbon Emissions Dashboard puts you in control of your data. It helps you analyse emissions by carrier, country, customer or mode of transport across the past 24 months, enabling you to spot trends and identify ways to reduce your emissions.

GIVE YOUR CUSTOMERS THEIR OWN CARBON STATEMENT

We make it possible for you to help your customers tackle their own supply chain emissions. Use the dashboard to give them a personalised Carbon Statement and then work with them to identify ways to reduce their emissions through changing customer behaviour or altering order patterns.

HARMONISED EMISSIONS REPORTING

We give you like-for-like comparisons by harmonising and standardising emissions calculations across all modes and transportation providers.



GREENER CHOICES WITH GREENER ROUTES

More than simply data, we give you actionable insights that help you make emission-reducing decisions across your supply chain.

STAND OUT FOR SUSTAINABILITY

Customers are becoming increasingly interested in the environmental impact of their suppliers.

Using Greener Routes demonstrates your commitment to sustainability, improving your reputation and helping you meet customer expectations.

ONE PLATFORM FOR ALL YOUR LOGISTICS NEEDS

Accessing your emissions data through myCCL simplifies processes and saves valuable time.

myCCL offers complete control, with end-to-end visibility and consolidated shipment data across all carriers and modes of transport on one easy-to-use platform.

EXPERTISE FROM YOUR SUPPLY CHAIN PARTNER

Our dedicated Sustainability Team and knowledgeable logistics experts will support you in taking action to measure, manage and minimise your supply chain emissions.



DELIVERING HAPPINESS...

Isn't left to chance at CCL.



We've been Delivering Happiness since 1999, and our people really are our secret sauce.

We're passionate about customer service and everyone at CCL knows and understands how valuable their contribution is and what's expected from them – day in, day out.

OUR PEOPLE

CCL's success is driven by the talented teams working across our locations throughout the UK.

Our logistics experts, customer service superstars and technology innovators work with pride, passion and commitment to provide the level of customer service that CCL is renowned for.

When you choose CCL, you get more than an unrivalled range of logistics services and innovative technology solutions, you get a team of people on your side who will help you get the best for your supply chain.

SERVICE YOU CAN DEPEND ON

When you book with CCL, you also get our Customer Service teams working for you – they care as much about your delivery as you do, proactively managing each shipment from collection to delivery and resolving issues as they arise.

ALWAYS ON CALL

Just one call away, our Customer Service teams are always available when you need them, ready to support your logistics needs.

Enjoy peace of mind that you can discuss any challenges with people who understand your business and will find solutions fast.

— A COLLABORATIVE APPROACH

Our Sales, Onboarding and Customer Solutions teams will work with you to find the right service offering. We'll help you optimise your operations, transport materials and goods more efficiently, and support you in getting the most out of our logistics services and technology solutions.

— WE WANT TO GROW OLD WITH YOU

We know what lifetime value means and we're dedicated to working with you every day to help you successfully build your business.

— CONTINUOUS IMPROVEMENT

By understanding and fully aligning to your business' goals, we're able to modify the solutions and services we provide to you, with each change bringing incremental improvements that add up to significant gains over time.

Everything we do is focused on Delivering Happiness"

Callum Bastock, CEO

OUR PURPOSE

Delivering Happiness

OUR VISION

We want to be Number One for Logistics Services, Technology Solutions and Customer Service that combine to help customers reduce their costs and grow, sustainably.

delivering
happiness®

OUR VALUES

PASSION

Love what you do and be brilliant

INTEGRITY

Do the right thing

PEOPLE

Value and respect everyone

SERVICE

Live up to every promise

INNOVATION

Make it better

SUSTAINABILITY

Care about the environment



TALK TO US

Find out how we can help you reduce costs and grow, sustainably.

EMAIL hello@ccl-logistics.com
CALL 01292 310 510

Or speak to your Account Manager.
www.ccl-logistics.com