



VISIBLY BETTER SEA FREIGHT

SMARTER SEA FREIGHT SOLUTIONS FROM CCL

Full visibility of your supply chain, with powerful planning and exception management tools.



LOADED
AT PORT



LIVE TRACKING
AT SEA



ARRIVAL AT PORT
OF DISCHARGE



CUSTOMS
CLEARANCE



DELIVERED
TO DOOR

YOUR SUPPLY CHAIN PARTNER

Helping you reduce costs and grow, sustainably.

SEA FREIGHT MANAGEMENT MADE EASY

GPS VESSEL TRACKING

Track all your FCL and LCL shipments from port to port with GPS vessel tracking. Follow the progress of an individual shipment or get an overview of your full supply chain with our live Vessel Mapping software.

DYNAMIC ETA'S

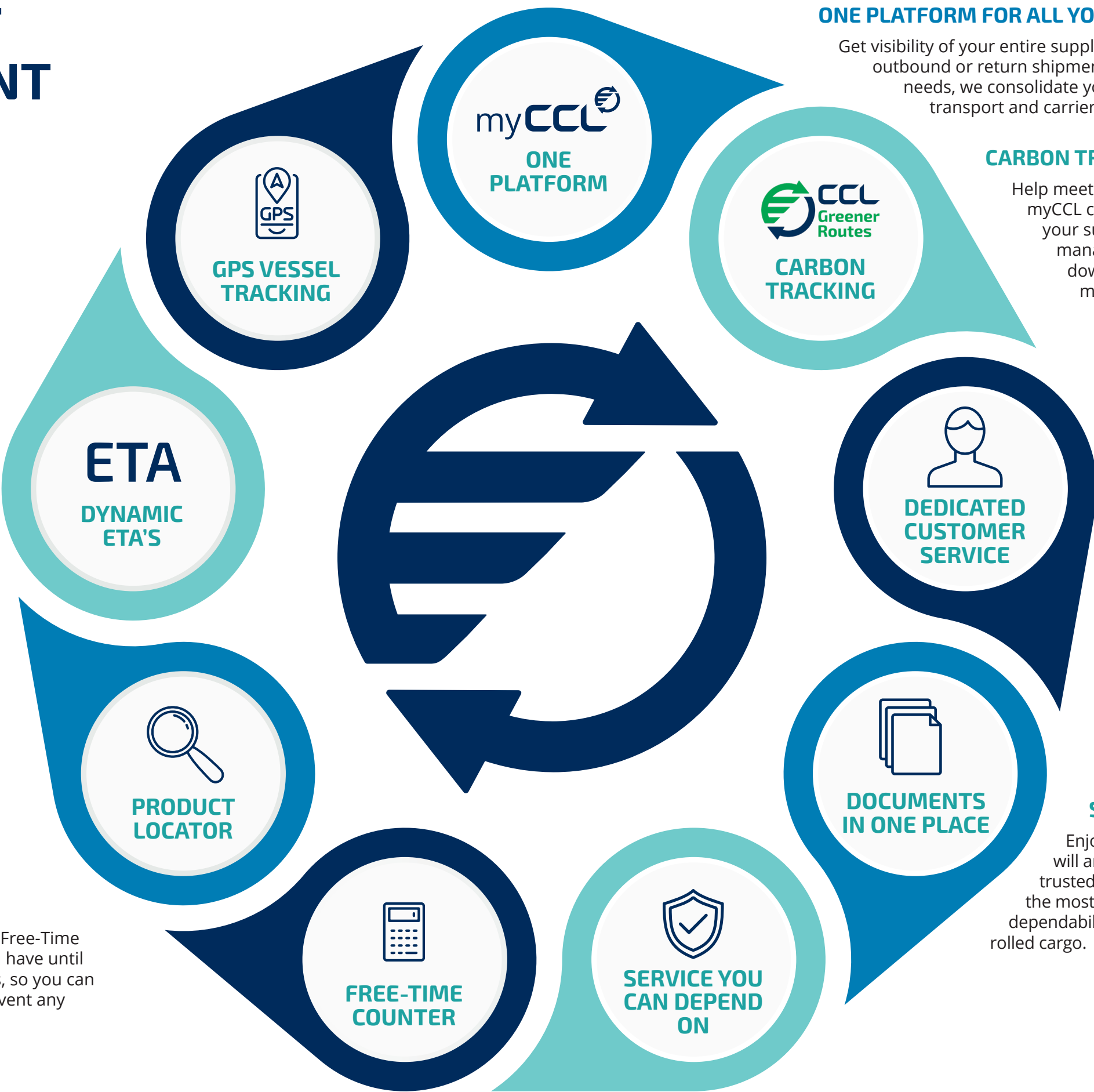
Know when your goods will arrive so you can get on with critical business planning. Updates flow into myCCL and dynamically adjust the predicted ETA, so you have the most accurate date for when your goods will arrive at the final port of discharge, clear customs and ultimately be delivered.

PRODUCT LOCATOR

Keep on top of supply chain planning and production scheduling with myCCL's Product Locator. Search for goods by product description or SKU to find the vessel, container and predicted arrival date — eliminating the need to manually update spreadsheets and saving hours of valuable time.

FREE-TIME COUNTER

Avoid additional charges with myCCL's Free-Time Counter. It lets you know how long you have until each container starts incurring charges, so you can prioritise clearance and delivery to prevent any unwanted costs.



ONE PLATFORM FOR ALL YOUR LOGISTICS NEEDS

Get visibility of your entire supply chain with myCCL, whether inbound, outbound or return shipments. No matter how complex your needs, we consolidate your shipment data across all modes of transport and carriers on one easy-to-use platform.

CARBON TRACKING

Help meet your company's sustainability goals. myCCL calculates the carbon footprint for all your supply chain movements, helping you manage and report both upstream and downstream Scope 3 emissions across all modes of transport.

DEDICATED CUSTOMER SERVICE

Get help when you need it most. Our knowledgeable Customer Service Team and dedicated Account Managers are available to help, answering any questions and supporting you in exceeding your supply chain goals.

ALL YOUR DOCUMENTS IN ONE PLACE

Access important shipping documents whenever you need them. All your order, invoice and import/export documents are stored on myCCL, keeping them in one central place and easy to retrieve at any time.

SERVICE YOU CAN DEPEND ON

Enjoy peace of mind that your goods will arrive when they're meant to. As your trusted freight partner, we only work with the most reliable shipping lines to optimise dependability of sailings and minimise the pain of rolled cargo.

PUTTING YOU AT THE HELM

Our Sea Freight offering puts you in control of your entire Supply Chain. With full visibility, dynamic ETA's and simplified order management, it's never been easier to reduce costs and grow, sustainably.



// CCL's Sea Freight Tracking Solutions have solved so many of the problems we'd been facing with our sea freight imports. Knowing when the goods are going to arrive improves our planning and helps control costs.

The Free-Time Counter means we avoid unnecessary demurrage charges, and seeing where our containers are on a map helps build trust. **//**

Operations Manager, UK manufacturing company



VISIBLY BETTER SEA FREIGHT WITH CCL

To find out how CCL can bring the power of technology to your supply chain, speak to one of the CCL team today.

EMAIL hello@ccl-logistics.com

CALL 01292 310 510

Or speak to your Account Manager.

www.ccl-logistics.com